

# X-Ray Quiz

All these pets swallowed unusual things - can you match the pet to their x-ray using our clues?



**Jasmine**



Quackquack

**Teleigha**



Hook, line and sinker

**Max**



Anyone for dessert

**Charlie**



Reach for the stars

**Daisy**



A stitch in time

**Henry**



A whole new ball game

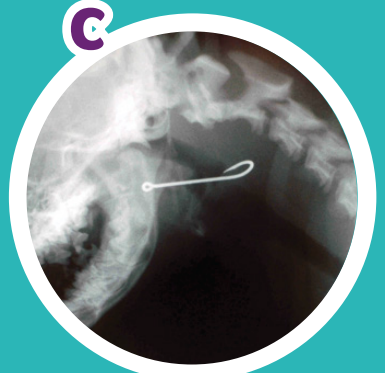
**A**



**B**



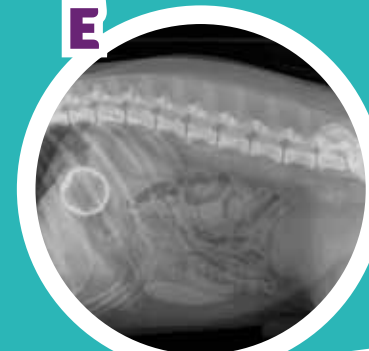
**C**



**D**



**E**



**F**

